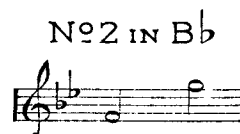


HER NAME IS MARY



WORDS BY

BRUCE SIEVIER
AND
HAROLD RAMSAY

music *by* HAROLD RAMSAY

Price 3/- net.

31458

PRINTED IN
ENGLAND

CHAPPELL
& CO LTD
FIFTY
NEW BOND STREET
LONDON, W. 1.

NEW YORK AND
SYDNEY

HER NAME IS MARY

Words by
BRUCE SIEVIER
& HAROLD RAMSAY

Music by
HAROLD RAMSAY

Moderato con moto

VOICE

PIANO

f *cresc.* *rit.*

mf *a tempo* *mf*

There's a mai - den with a dim - ple when she's smil - ing,

And this mai - den is both sim - ple and be - guil - ing.

There are mo-ments when I feel That her charm and sweet ap-peal

Make her seem to be Like a dream to me.

rall. a poco *rit.*

REFRAIN

Her name is Ma - ry, The sweet-est name I know, And she's the one that

mp a tempo *mf*

I will love for ev - er and a day. She's so con - tra - ry

mf

To oth - er girls I've met, And that is why I'll love her when bru -

-nette has turned to grey. As side by side at ev - en - tide we

f animato

accel. f animato

*Red **

watch the sun des - cend - ing, I re - a - lise though day - light dies, true love is nev - er

dim.

dim. accel.

end - ing. Her name is Ma - ry, And ev - 'ry - where we go I

mf

mf

f

tell her that I'll love her so for ev - er and a day.

rall. *molto rit.*

mf
In a cot-tage i - vy-cov-ered and rose - la - den, That is where I

ped. *ped.*

first dis-cov - ered This sweet maid - en. I'll find Heav'n has come my way

When one love-ly sum-mer's day She becomes a part Of my ve - ry heart.

rall. a poco *rit.*

REFRAIN

Her name is Ma - ry, The sweet-est name I know, And

The first system of the refrain features a vocal line in G major with lyrics "Her name is Ma - ry, The sweet-est name I know, And". The piano accompaniment consists of a right-hand melody and a left-hand bass line. Dynamics include a forte (f) marking.

she's the one that I will love for ev - er and a day.

The second system continues the vocal line with lyrics "she's the one that I will love for ev - er and a day." The piano accompaniment continues with various chordal textures and melodic lines.

She's so con - tra - ry To oth - er girls I've met, And

The third system of the refrain has lyrics "She's so con - tra - ry To oth - er girls I've met, And". The piano accompaniment features a mix of chords and moving lines.

that is why I'll love her when bru - nette has turned to grey. As

The fourth system concludes the refrain with lyrics "that is why I'll love her when bru - nette has turned to grey. As". The piano accompaniment includes accents (>) on the final notes.

side by side at e - ven - tide we watch the sun de scen - ding, I

animato

re - al - ise though day - light dies true - love is nev - er end - ing.

Her name is Ma - ry, And ev - 'ry - where we go I

tell her that I'll love her so for ev - er and a day.

rit. ff